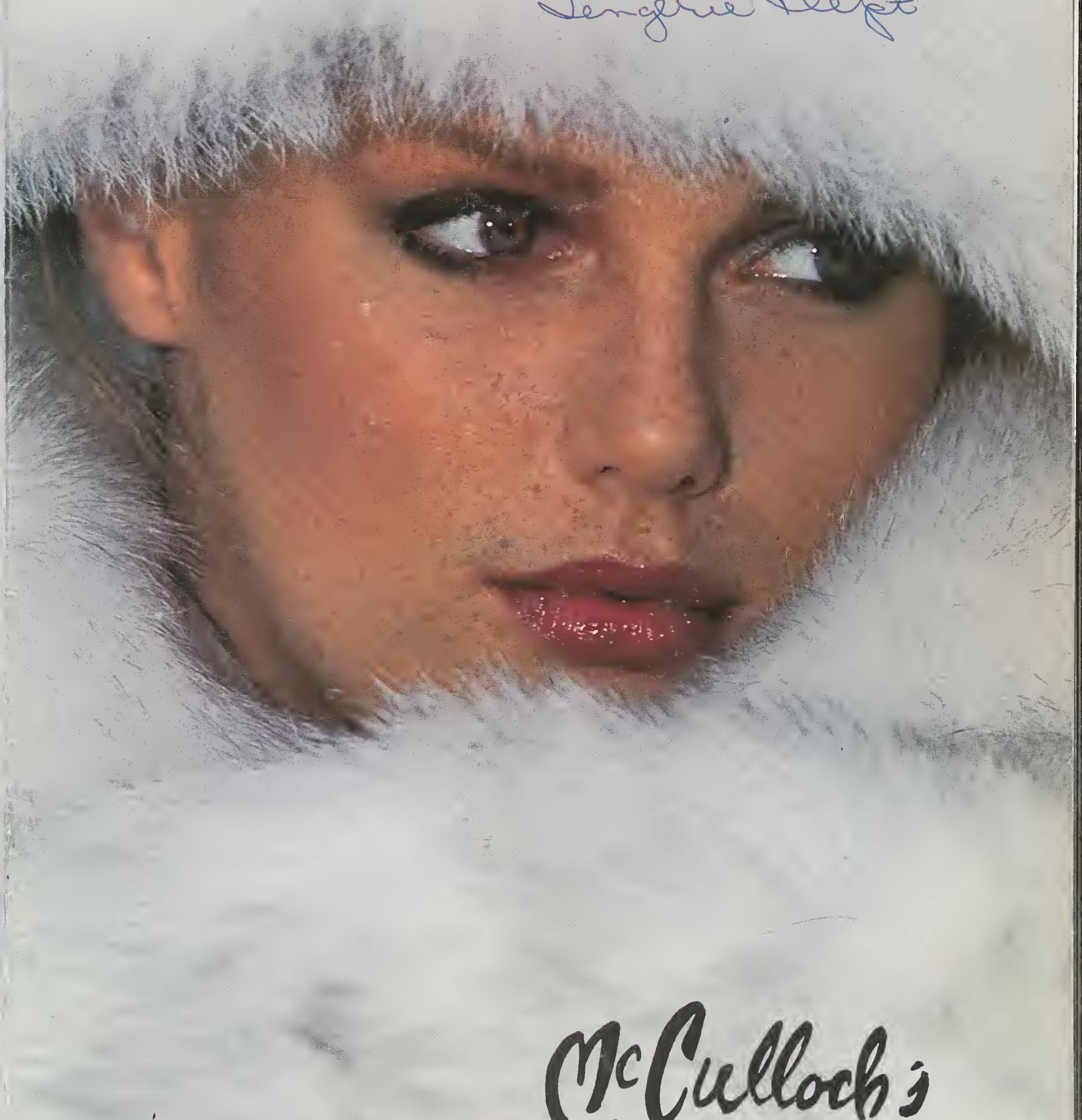


WARMEST WISHES

Sengene Dept



McCulloch's

2

STEPPING OUT



2A

2B



2C



2D

Smashing separates from Miss Capri of 100% Qiana® knit.

2A. Ribbon trimmed, permanent pleated "Pierrot" ruffle collar and pleated cuffs make this blouse a must in white or vanilla. S,M,L. **26.00**

2B. Today's most wanted long skirt has 3 tiers of permanent pleats. Yours to flaunt in black or brown. 8-16. **32.00**

2C. Beads are best. Bugle and cut beads form a chevron design on Walborg's mini "Hobo" bag for evening. Adjustable chain link shoulder strap. Alabaster, black, gold or silver. **12.00**

2D. The day into evening bag from Harry Levine. Gold chanel trim on a snap close front flap, gold link chain convertible shoulder strap. Fabric lined, black peau de soie, gold or silver kid. **13.00**

After dark duo from Teddi of California.

3A. Flattery follows the woman wearing this polyester crepe peasant blouse with a keyhole tie neckline. Black only. 8-18. **17.00**

3B. Make a splash in an allover pleated nylon chiffon skirt with bright splashes of flowers on a black ground. 8-18. **25.00**

3C. Shirt collector's dream. Chaus' notched collar, polyester silk crepe de chine shirt with self covered buttons and a pocket. A beauty of a basic in red, white, blue or pink. 8-16. **21.00**

3D. Touch of class on Rhoda Lee's polyester crepe button front blouson ... lace and embroidered small round collar, embroidered pocket. White or beige. 8-18. **22.00**

Cover: Fur by the House of Black Diamond



3A

3B



3C

3D

EASY DOES IT



4A. All the good things rolled into one. Elles Belles' blouse has a shirred elastic waist, full dolman sleeves and a drawstring peasant neckline. What's more, it's of Klopman's 100% Qiana® nylon. A must in creme or peach. S,M,L. **26.00**

4B. Surefire success. Shellmaster's allover crystal pleated top of polyester pointelle knit. Self tie keyhole jewel neck for added interest. Brown, string or black. S,M,L,XL. **25.00**

Two for the show ... dinner, dancing, you name it. Both of interlock polyester, from Editions by Penny Young.

4C. Lavish lace ruffles the neckline, trims the sleeves on a beauty of a blouse. Cream. 8-16. **28.00**

4D. The newest "must have" long skirt has tiered flounces for plenty of swing. Black. 8-16. **16.00**

4E. A touch of nostalgia with a feel for today ... macrame detail outlines the peasant neckline of a sensational tunic top to wear with its own long skirt. From Darcy of 100% polyester interlock by Initial Trends®. Beige. 8-16. **38.00**





5A

5B

Challis-forth in 80% DuPont Dacron® polyester/20% wool challis partners from Jinny Jin. An unbeatable combination in popular paisley print. 8-18.

5A. The peasant blouse with $\frac{3}{4}$ sleeves. **24.00**

5B. The elastic waist skirt has a full flounce bottom. **30.00**



6A



6B



6C

6A. Challis makes news in solid ivory with pastel embroidery on front and back. Sunday Times' peasant blouson has a satin pull through ribbon at the neck. S,M,L. **24.00**

6B. Tone on tone striped satin blouse from Joysee features cap sleeves, soft bow tie. Ivory or black. S,M,L. **16.00**

6C. Party perfect velveteen jumper styled like a sailor top and piped in ivory satin with lace edging. From Pea Pod in silver grey or black. 5-13. **44.00**

6D. Satin trims the collar, placket, pocket borders and drawstring ties on Escapades' cap sleeve blouse. Of Creslan® acrylic fiber in blue or winter white. S,M,L. **20.00**

Creslan

6E. Soft 'n sweet satin blouse from Bugaboo has a mandarin collar, shirred yoke front and back. Pale blue or ivory. S,M,L. **21.00**



6D



6E



7A

7B

Peasant dressing at its best by Downtown Express. Pale blue or black Ariana® jersey. 5-13.

7A. Soft flutter ruffle peasant top has small tie front bow, elasticized puff sleeves. **22.00**

7B. Full swing skirt with an easy shirred elastic waist, small tie front bow. **30.00**

8A. V-flap button pockets trim the blouson tie waist and sleeve of this acrylic pullover from Elliot International. Skivvy neck, cable yoke design. Natural or camel. S,M,L. **17.00**

8B. Pointelle stitch striped U-neck by The Right Time. Wear-Dated® Acrilan® acrylic* for easy wearin' n care. Burlap/multi or Pastel/multi. S,M,L. **20.00**



8C. Alberoy's softest lambswool/angora/nylon blend pullover with a newsy blouson tie bottom, 3 button Henley neck. Winter white or blue. S,M,L. **28.00**

8D. Luscious lambswool cowl neck pullover from Duet updates your separates in ivory, beige heather or blue sky. S,M,L. **24.00**

9A. Button shoulder pullover from Panacea in a heathery blend of shetland/Wintuk acrylic with a Fair Isle pattern yoke. Coral heather, tan heather or light grey heather. S,M,L. **21.00**

9B. Allover Fair Isle pattern crew neck pullover from Bananas in Wintuk® yarns of DuPont Orlon® acrylic. Multi/winter white. S,M,L. **25.00**



*Warranted for 1 year's normal wear, refund or replacement when returned with tag and sales slip to Monsanto.

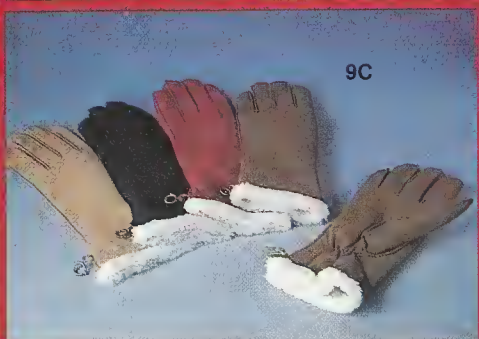


PASTEL PICK-UPS



9A

9B



9C



9D

9C. "G", what great gloves. Pile lined pseudo-suede with handstitched detail. Golden "G" clasp holds pair together. From Grandoe. Russet, camel, black or copper. A or B. **13.00**

9D. Patch perfect gloves by Fownes. Contrast suede patchwork with Orlon® acrylic glove. Bone, camel, black, rust or navy. One size. **8.00**

10A. Fashion wrap up. Multi-color acrylic stripe wrap 2 pocket cardigan by R.B.K. Imports. Rust or navy. S, M, L. **18.00**

10B. Better than ever acrylic sweater jacket by Bandini features pointelle cable borders, pointed collar and two patch pockets. Pull through tie belt. Natural or camel. S, M, L. **36.00**

10C. Think tunic for added warmth this winter. Layer a look of your own with Knitivo's acrylic belted tunic. Cap sleeves, cowl neck, side slits and 2 pockets. Cream or toast. S, M, L. **19.00**

10A

You can bet on Betmar for the best in chill chasing combos... here, a group of acrylic jacquard coordinates in ivory/taupe, ivory/black or ivory/navy.

11D. Sweater. S, M, L. **14.00**

11E. Cuff cap. **5.00**

11F. Scarf. **7.00**

11G. Glove. **3.00**

10B

10C



KNIT HITS



Ben Berger gets it together for giving via an acrylic/mohair/boucle textured ensemble in brown, blue or rust. One size.

11A. Mitten. 5.00

11B. Cuffed hat. 5.00

11C. 6' scarf with hand tied fringe. 8.00

11H. The year of the shawl... wrap it, drape it, tie it, but don't be without it. Imported woven acrylic shawl from David E. Schwab with a sunburst and border pattern, matching fringe. Rust, wine, brown, black, navy or grey combined with winter white. **11.00**

11J. Tweed fisherman stitch cardigan has a convertible collar, cuffed patch pockets by Robby Kent. Wintuk® yarns of DuPont Orlon® acrylic. Reindeer/white or black/white. S, M, L. **30.00**

Wintuk
by DuPont Orlon



SOFTEN YOUR OUTLOOK

12A



12A. The difference is Trevira® Elite by Initial Trends and the result is spectacular. Soft, sensuous blouson dress with contrast band detail, 2-tone scarf. From Discovery I in grey or peach. 8-16. **48.00**

13A. Glitter and glow in an acrylic/lurex striped cowl neck belted tunic from R.B.K. Imports. Natural/gold or black/silver. S, M, L. **20.00**

13B. Shades of night on a just right acrylic/lurex ombre striped blouson with a cowl neck. By Miss Gotham in brown-multi or black-multi. S, M, L. **18.00**

13C. Dynamite Victorian flame stitch square neck blouson from Duet. 100% Bright Acrilan® acrylic. Wear-Dated®* by Monsanto. Choose Antique Ivory or black. 34-40. **24.00**



13D. Forever beautiful. 100% polyester dress and jacket from Forever Young. Ribbed tuck detail trims the long sleeve jacket over a short sleeve, square neck, A-line dress. Beige or blue. 10-20. **52.00**

13E. Gallord's classic shirt in satiny 100% Trilobel® polyester with a notched collar, Shirred yoke and detachable tie. White or creme. 8-18. **28.00**

Success-ory Story... Top choice from Riviera.

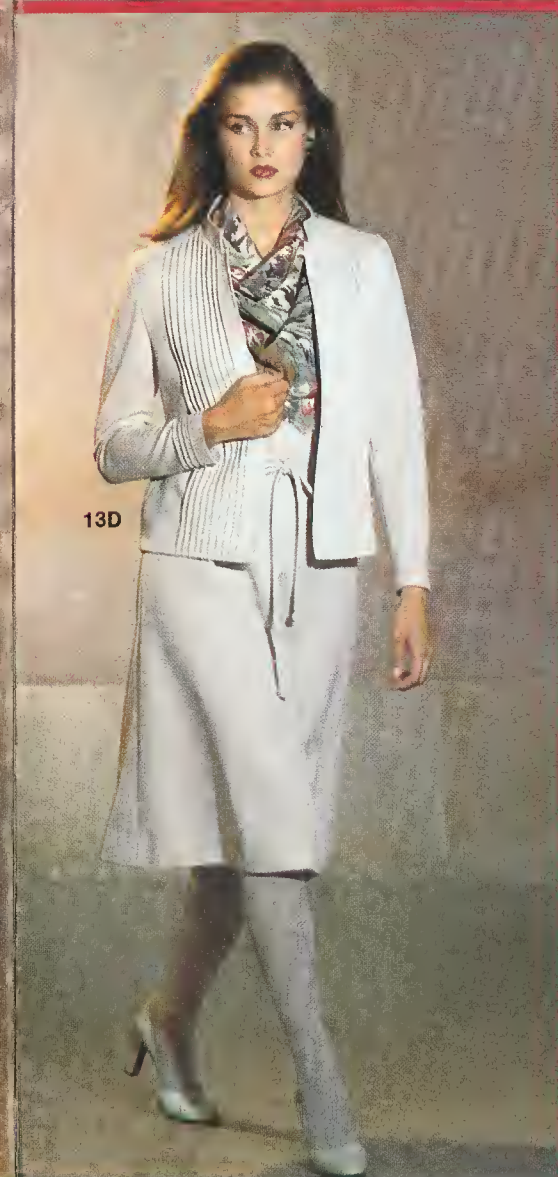
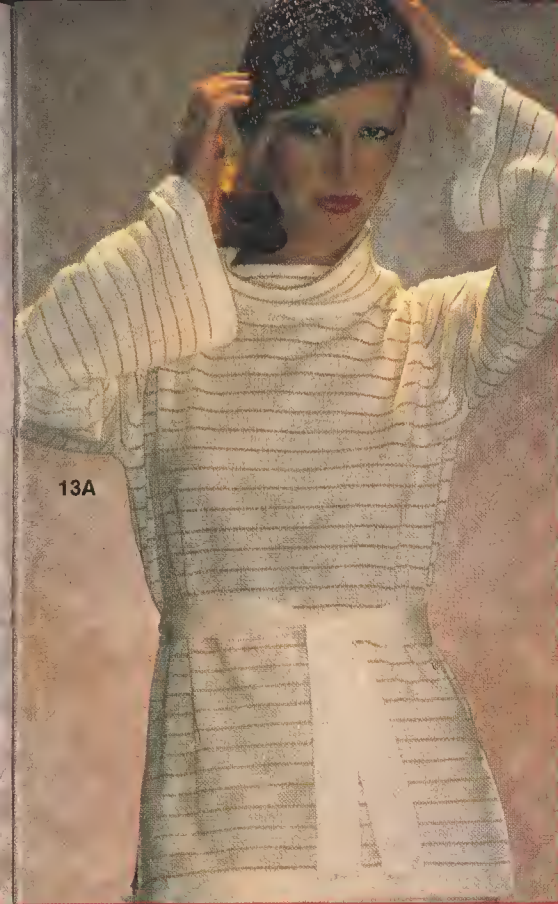
13F. Nouveau bow top comb with buffed finish on a 2 3/4" color coordinated comb. Burgundy, tortoise, black or Chinese red. **3.00 ea.**

13G. Silver rhinestone crystal comb. Double row of rhinestones top a 1 3/4" crystal comb. **5.00 ea.**

13H. Scalloped top plastic combs in a choice of tortoise or ass't. fashion colors. **2.00 Pr.**

13J. Wonderful weekends belong to the gal who chooses Ted Martin's 100% Dacron® polyester gabardine "weekender outfit". Go everywhere skirt, pants and jacket tailored to perfection in toast or navy. 8-16. **60.00**

*Warranted for one full year's normal wear, refund or replacement when returned with tag and sales slip to Monsanto.



CHILL CHASERS

14A. The latest look from Energy. Oriental influenced nylon quilted pant coat with patch pockets, contrast rib trim. Red, blue or tan. S, M, L. **36.00**

14B. Come rain or shine, you'll shine in Bonders' kiss bonded polyester/cotton poplin pant coat with a warm quilt lining. Fake fur notched shawl collar, tie belt and tucked back detail. Bone or persimmon. 8-18. **59.00**

14C. Plush Orlon® acrylic pile lines the body and hood of this super bonded texturized woven polyester pant coat from Fitz Rainwear. Tie belt, toggle buttons, patch pockets and turn back cuffs complete the look. British tan, rust. 8-18. **60.00**

14D. Herman Kay's classic. Plush wool/nylon blend with acrylic plaid lining. Toggle button single breasted front, inverted back pleat. Cuffed sleeve with tab and button. Oatmeal, grey or camel. 8-18. **72.00**

14E. The Great pretender. Bobbie Ellen's sensational wrap style fake mink pant coat has bell sleeves, fake leather belt. A real beauty with no fooling. Ranch or hazel. 8-18. **84.00**



14A



14B

14C



14D



14E

ON TOP

A1. "Bon Appetit" oven-to-table porcelain serving ware from Style Setter . . . suitable for Micro-wave ovens. AuGratin dish, 2-qt. Souffle or 10 1/4" Quiche. Each **12.00**

A2. Heavyweight solid teak salad set imported by Philcraft. Serving bowl, four individual bowls and two servers. 7-Pc. **25.00**

A3. Automatic Crepe Maker by Contempra Inds. 7 1/2" Teflon® II cooking surface, thermostatic control and ready-light in handle. **20.00**

A4. Elegant floral Greycut wine set by Toscana Imports with decanter plus six glasses. 7-Pc. **24.00**

A5. Silverplated cheese tray with removable imported Italian marble board, crystal dome. Smart Serving from Leonard Silver. **25.00**

A6. Farberware's Food Processor does it all, complete with four processor blades. The perfect kitchen helper for fast food fans and gourmet cooks alike. **99.99**

A7. Farberware's 11-pc. stainless steel cookware set with aluminum clad bottoms. Set consists of: 1- and 3-qt. covered saucepans, 1 1/2-qt. covered utility saucepan, 2-qt. double boiler insert (fits 3-qt. saucepan), 6-qt. saucepot with cover, 7" and 10 1/2" fry pans. Set **79.99**

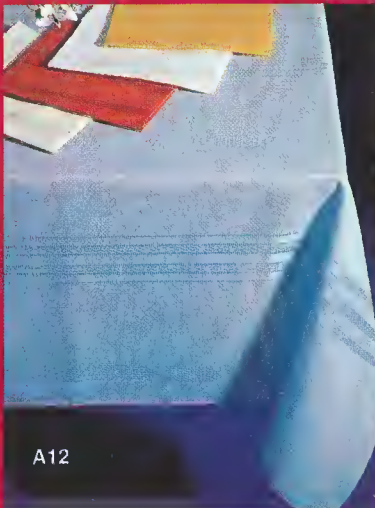
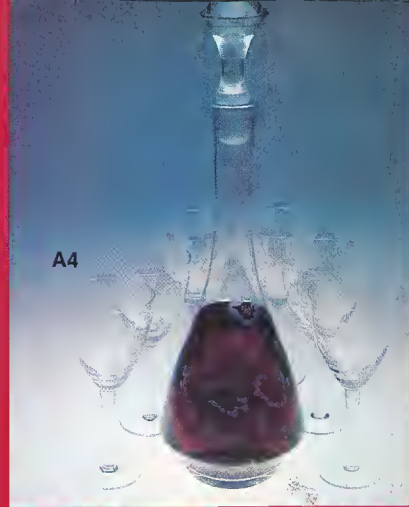
A8. "Middlebury" an ultra elegant beaded border flatware pattern from National Silver. 50-pc. stainless service for 8 includes 8 each: dinner knives, dinner forks, salad forks and soup spoons; plus 16 teaspoons, 1 butter knife and 1 sugar spoon. 50-pc. Set. **25.00**

A9. Thriftee Yogurt Maker by Contempra Inds. Includes six 8-oz. jars and recipe booklet with ideas for making dips, salads, soups, drinks and more. **12.00**

A10. "Rochelle" a beautiful linen look polyester/cotton cloth by Sunweave, highlighted with matching lace border. Machine wash, no-iron, soil release. Blue, white, beige or gold.
52"x70" oblong, **13.00**; 68"x90" oblong/oval, **22.00**; 68"x104" oblong, **24.00**; 68" round, **16.00**; Napkins, 17"x17", **2.25 ea.**

A11. "Marquis" by Grossman & Weissman. An elegant printed sheer polyester cloth with a smart floral design. Machine wash, permanent press, soil release. Frosty white on white.
52"x70" oblong, **12.50**; 65"x86" oblong/oval, **17.00**; 65"x104" oblong, **20.00**; 65" round, **13.50**; Napkins, 20"x20", **1.75 ea.**

A12. "Courtrai" by John C. Sleater. Permanent press, soil release woven cloth with elegant satin-like bands of Fibro® rayon. sky blue, gold, terra cotta, white or bone.
52"x70" oblong, **12.00**; 60"x90" oblong/oval, **17.00**; 60"x104" oblong, **20.00**; 68" round, fringed, **18.00**; Napkins, 17"x17", **1.50 ea.**





B1



B2

B1. "Garden Terrace" by Barclay Home Products. Floral bouquets highlight a traditional handkerchief motif on a snugly warm DuPont Dacron®—polyester filled comforter. Blue or bone. Twin, 72"x90", **25.00**; Full, 80"x90", **30.00**; Queen/King, 105"x90", **45.00**; Pillow sham, 21"x27", **9.00 ea.**



B4

B2. Treat yourself or someone special to the luxury of satin sheets. "Trimline" by Grossman & Weissman features sophisticated contrast piping on 100% DuPont Antron® III nylon satin. Machine wash, no iron. Ivory, opaline blue, canary or persimmon. Full flat/fitted, **13.00**; Queen flat/fitted, **16.00**; Standard pillow cases, **8.00 pr.**



B3

B3. "Just Pull the Tape for a Perfect Drape" . . . famous Cameo® Shir-Back® Curtain. DuPont Dacron® polyester/textured cotton with 6¾" ruffle. White or eggshell. 96"x81", **18.00 pr.**; 136"x81", **28.00 pr.**; 180"x81", **37.00 pr.**; 254"x81", **52.00 pr.**; 324"x81", **65.00 pr.**

B4. Drift off in peace on a "Wave" patterned ensemble by Lady Linda. Fully quilted polyester/cotton throw in soft stripes of peach/pewter, green/gold or blue/green. Twin throw, **34.00**; Full throw, **40.00**; Queen throw, **46.00**; Dual throw, **54.00**; Sham, **9.00**; Drapery, 48"x84", **15.00 pr.**



B6

B5. "Monarch Butterfly" latch hook kit by Columbia Minerva gives hours of creative pleasure. 16"x16" finished pillow or wall hanging. Includes mesh canvas and precut yarn. **12.00**

B6. Lysander adds a plush finishing touch to your bedroom or bath with "Amy" . . . a carved design 100% nylon scatter rug with a unique floral overlay. Cogniac, yellow, robin blue, sable or sea foam. 21"x34", **9.00**; 24"x40", **12.00**; 21"x27", **9.00**; Matching lid cover, **4.00**



B5

B7. "Sun Valley" by Abouchar. Natural macrame look on plush sheared towel ensemble. Three tone shades of copper, brown, champagne or blue.



B7

Bath towel, **6.00**; Hand towel, **3.50**; Wash cloth, **2.25**; Fingertip towel, **2.50**

Tie up shopping early with a selection from Wembley:

C1. Polyester brocade satin tapestries in woven designs, wash 'n wear Wemlon® in assorted color combinations, **7.50**; **C2.** Polyester classic woven stripes. Assorted color combinations, **8.50**; **C3.** Polyester woven dot. Assorted colors, **6.50**. **C4.** Polyester satin neats, wash 'n wear Wemlon®, **7.50**

You've got to hand it to the person who gives gloves by Superb Gloves.

C5. Vinyl palm, acrylic blend knit cable back. Thumb guard construction. Camel, black or brown. One size fits all. **6.00**

C6. Dacron® polyester/wool knit lined leather gloves. Black or brown. S,M,L,XL. **13.00**

C7. Someone on your list will love handkerchiefs by Imperial Handkerchief Co. Large size permanent press Dacron® polyester/cotton in a choice of styles. White only. "Seasons Greetings" gift card box of 6 handkerchiefs. **5.50**; Personalized white on white initial handkerchiefs (sorry, no I,O,Q,U,V,X,Y,Z). Gift box of 3. **5.00**

C8. Crew-Sader® by Interwoven®. Boxed assortment of 3 Sanitized® treated, hi-bulk Orlon® acrylic/stretch nylon socks. One size fits 10-13. Navy, brown, black assortment; Dark oxford, hunter, black assortment; British camel blend, denim blue, saddle brown assortment, Box of 3. **5.25**

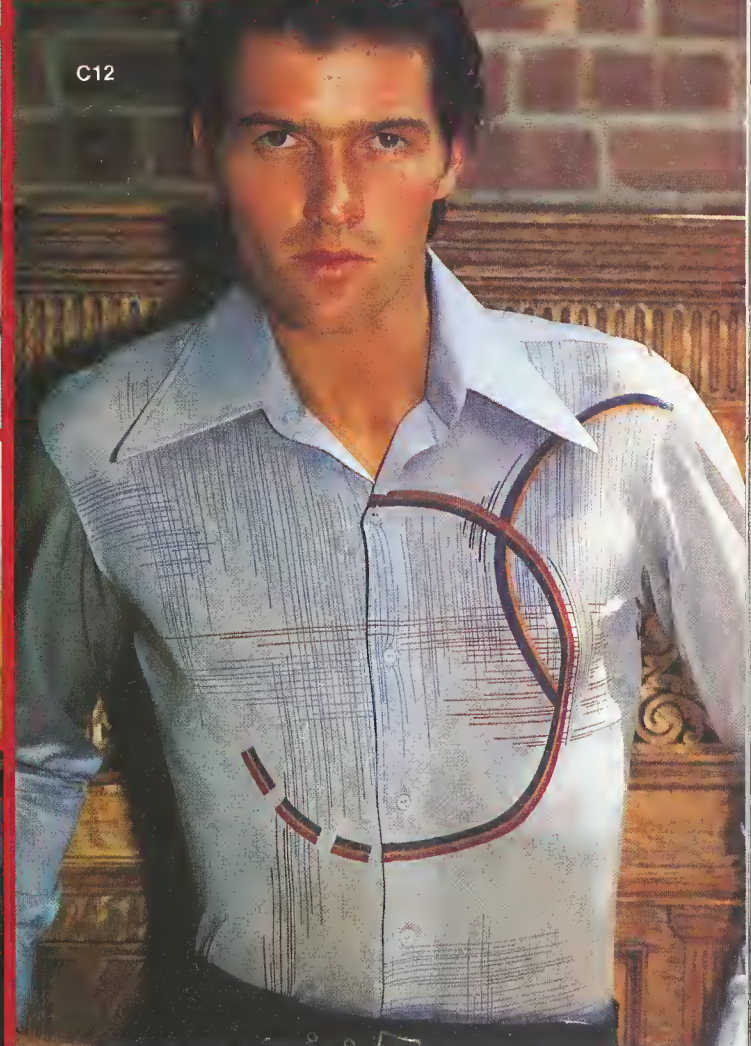
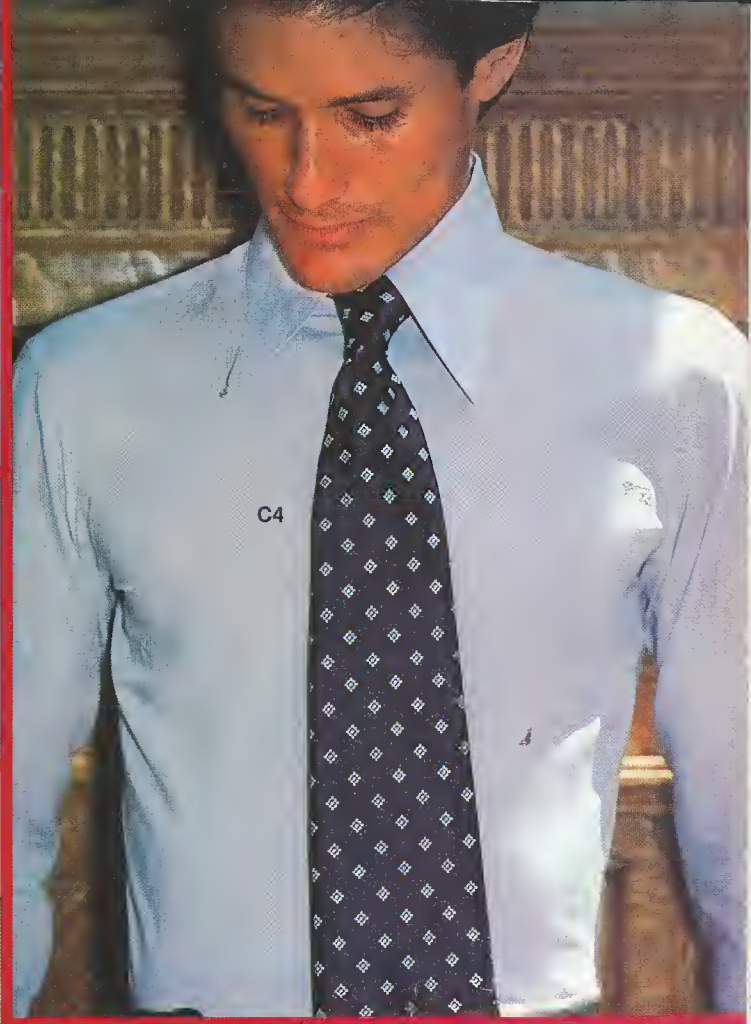
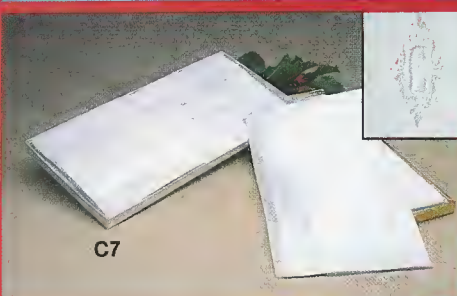
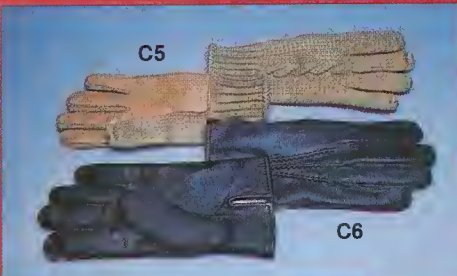
C9. Three from Jiffies. Arnel® triacetate/nylon velour slippers in a choice of styles. All have P.V.C. vinyl sole, all machine wash 'n dry. Sizes: S (6½, 7, 7½), M (8, 8½, 9), ML (9½, 10, 10½), L (11, 11½, 12), XL (12½, 13, 14). Rex closed slipper in blue, brown, rust or red, **6.00**; Sussex scuff in red, blue, brown or camel, **6.00**; Pacer espadrille has two tone designer stripe. Blue, camel or red combinations, **7.00**

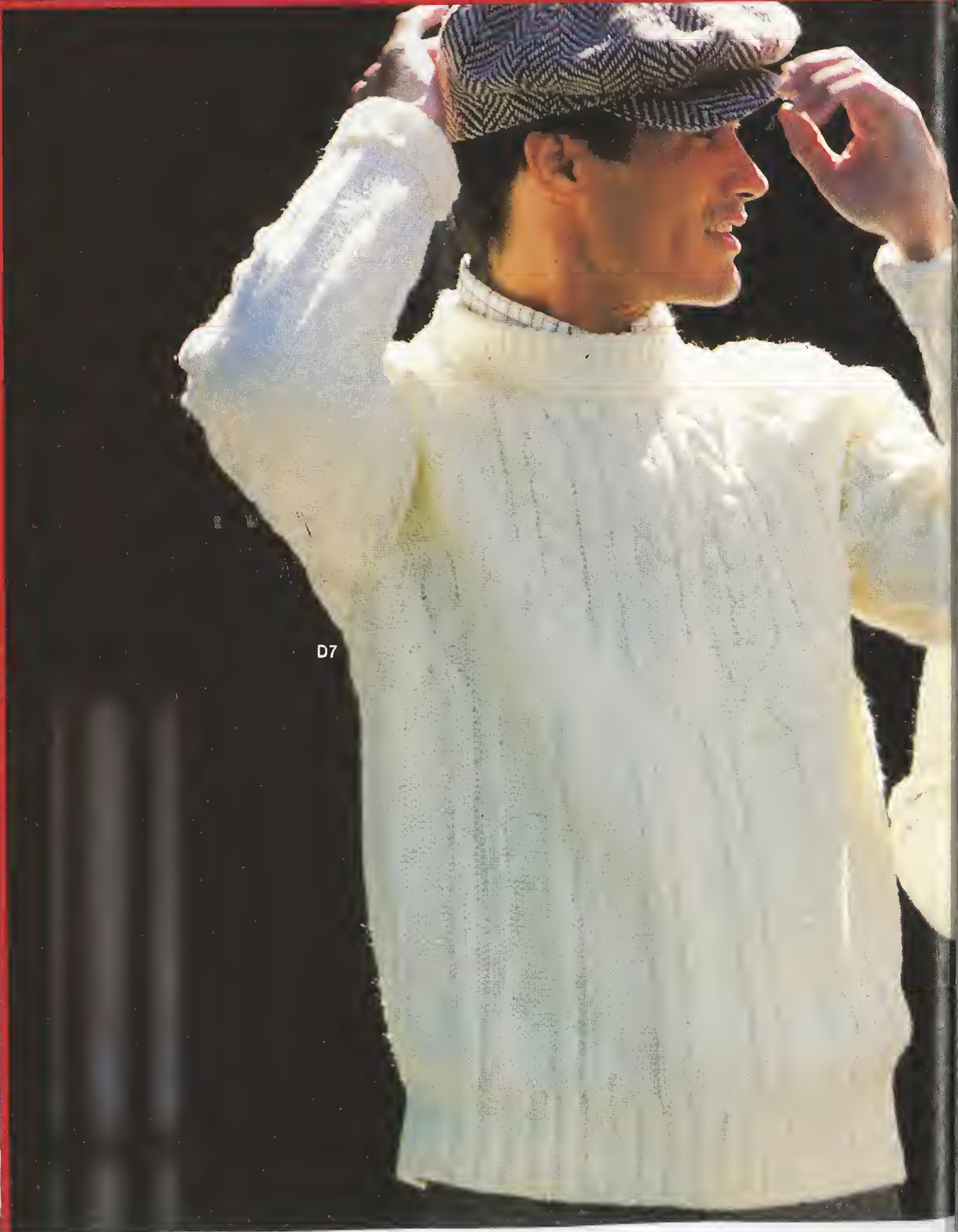
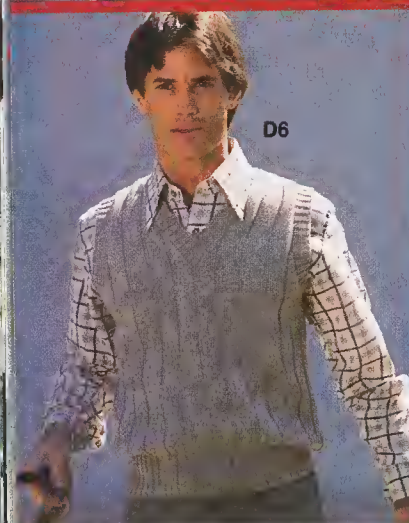
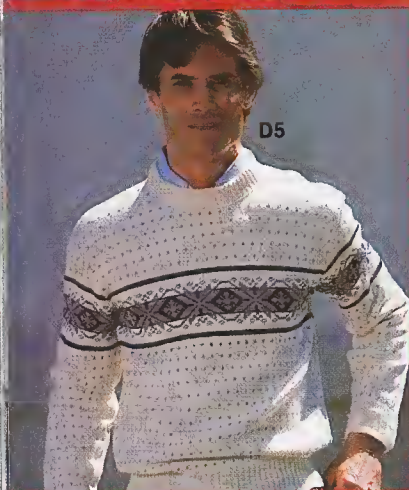
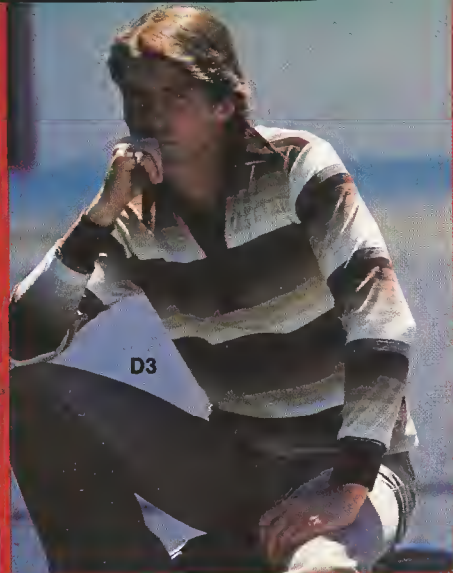
Aris Isotonor® gloves for him by Beau Brummel, creates an amazing Iso-Massage® like action to relax his hands. Both stretch woven nylon/Spandex.

C10. Knuckle hole style with perforated trim front and back. Black, brown or camel. Regular or large. **16.00**

C11. Tone on tone front and back trim, velcro closure. Brown on brown, black on black or camel on camel. Regular or large. **17.00**

C12. Front and back abstract design adds interest to this acetate/nylon sport shirt from Ego by Bond Street. Machine wash. In assorted colors. S,M,L,XL. **17.00**







MALE ORDER

D1. Pick your plaid. Polyester/cotton "soft touch" brushed tartan plaid shirt styled the way he likes it with genuine horn buttons. Machine wash and dry. By Oxford. S,M,L,XL. **14.00**

D2. Celanese Arnel® triacetate/nylon Supersuede® from Fab Inds. by Capital-Mercury* makes up a super easy wearin' easy carin'™ shirt for your man of the moment. To give in camel, lt. blue or rust. S,M,L,XL. **14.00**

D3. Broadly striped placket front favorite with a difference ... it's plush, lush combed cotton/polyester velour. Coral Inds. in ass't stripes. S,M,L,XL. **25.00**

D4. Look of layering in one easy convertible crew neck pullover from Forum. Cotton/Trivera® blend with contrast stripe on sleeve, contrast collar, cuffs and pocket. Natural, navy or red. S,M,L,XL. **23.00**

D5. Popular allover jacquard patterned snowflake sweater from Puritan. Machine wash 'n dry 100% Wintuk Orlon® acrylic. Ecru/grey heather or navy. S,M,L,XL. **25.00**

D6. Welcome classic from Forum. Sleeveless v-neck spare rib sweater in easy care acrylic/polyester. Wicker (tan), oyster or light blue heather. S,M,XL. **15.00**

D7. Novelty cablé stitching makes this raglan sleeve crew neck pullover from Puritan a cut above the rest. Machine wash 'n dry acrylic in tan or natural. S,M,L,XL. **25.00**

E1. There's a sport. Forum's 100% Shelyt acrylic crew neck sweater with jacquard stripe on sleeve and upper arm. Oyster, linen or black. S,M,L,XL. **22.50**

E2. Stripes and geometrics combine for interest on a popular pullover with a half zip collar. Monsanto Wear-Dated® ** Acrilan® acrylic. By Milford Sportswear in navy/camel/ruby or bone/camel/grey. S,M,L,XL. **15.00**

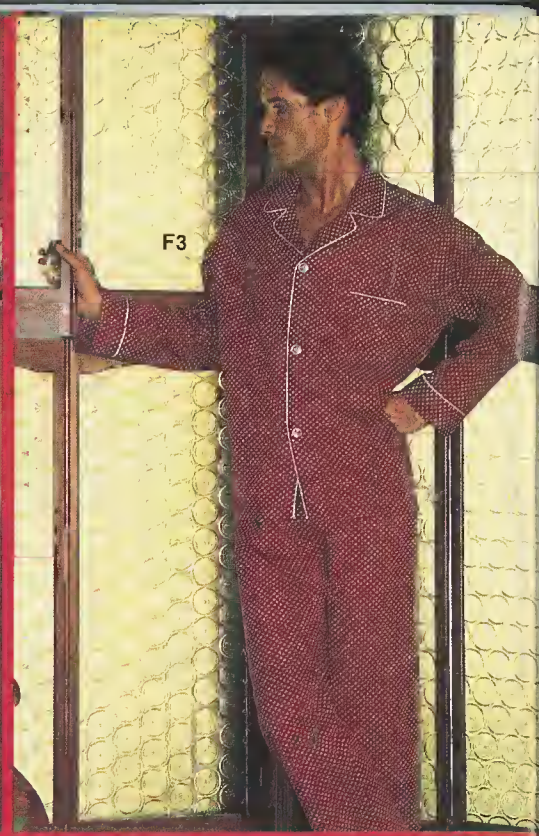
E3. Puritan's softest 100% virgin lambswool v-neck pullover is fully fashioned with saddle shoulders, machine wash and dry. Lt. blue, navy, lt. oxford or cashew. S,M,L,XL. **26.00**

E4. Man's best friend ... convertible collared cable cardigan with wood look buttons. 100% acrylic for machine wash and dry. By Puritan. Tan or natural. S,M,L,XL. **30.00**

*Arnel® triacetate is a trademark of Celanese Corporation. Supersuede® is a trademark of Fab Industries, Inc.

**Warranted for 1 full year's normal wear, refund or replacement when returned with tag and sales slip to Monsanto.





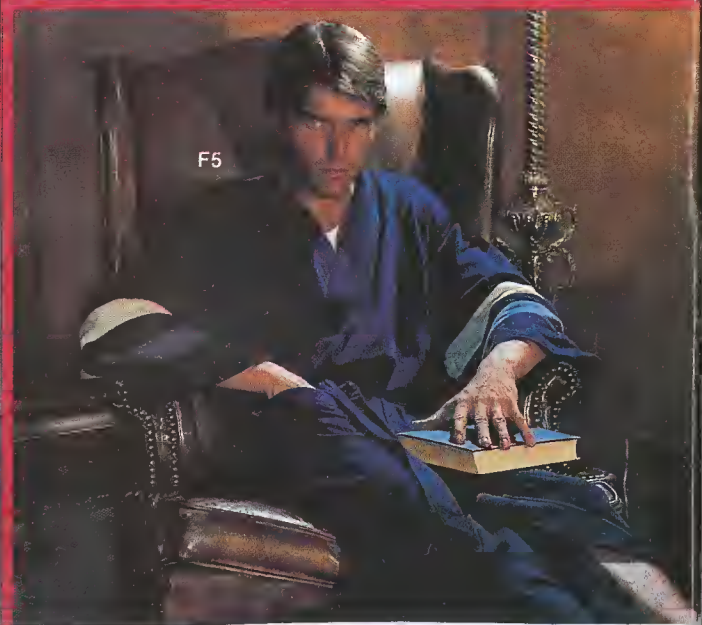
F1. Plush pleasure. Knee length acetate/nylon velour kimono with triple track stitching, 2 pockets, self belt. By Diplomat in burgundy, navy or camel. One size fits all. **20.00**

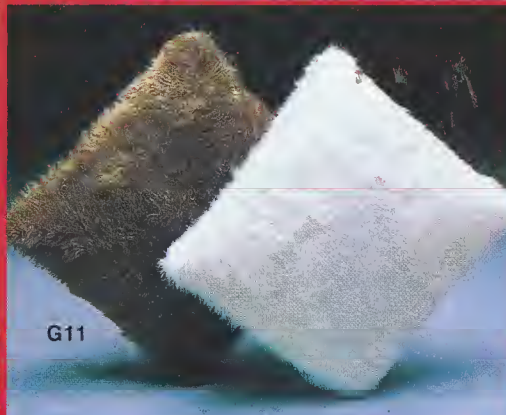
F2. When the last toy's assembled he'll appreciate lying back in Diplomat's sophisticated Avril® rayon/cotton pajamas. Blue or brown paisley top over solid black pant. S,M,L,XL. **22.50**

F3. Slip him classic coat style polka dot pajamas with white piping trim and watch his eyes light up. By Lord Berkleigh of permanent press polyester/cotton in burgundy, brown or navy. S,M,L,XL (A-B-C-D). **14.00**

F4. All set. Diplomat's gift set includes a cotton/polyester terry kimono in royal/white or white/royal, a Martex white terry bath towel and Canoe's soap-on-a-rope. Gift boxed, one size fits all. 3-pc. **30.00**

F5. Lush wrap. Floor length Arnel® /nylon velour kimono has contrast striping on the ¾ length sleeves. Self belt, two pockets. By Diplomat in Caspian blue, wine or brown. One size fits all. **30.00**





"Totems" by Rosenfeld go where you go in style. Super tough, water repellent ballistic nylon luggage with reinforced handles, brass zippers and hardware. Butterscotch.

- G1** CWB Bag, 8½"x12"x7" **22.00**
- G2** Super Shopping Bag, 19"x11"x6" **17.00**
- G3** Roll Bag, 18½"x9"x10" **19.00**

"Sunny Soft" exclusive grain tanned soft simulated bronze leather luggage from Rosenfeld. Tough, durable, lightweight, scuff resistant and fully lined. Brass zippers, hardware ... what more could you want?

- G4** 27" Pullman **45.00**
- G5** 24" Pullman **40.00**
- G6** 20" Shoulder Carry-on **40.00**
- G7** Lighten your load with luggage caddy by Dynamic Classic. Sturdy chrome steel frame supports up to 200 lbs., telescopic handles fold to 17". Rubber tires, elastic strap. **13.00**

Handloomed woven acrylic/wool pillows, filled with foam wrapped polyester for comfort and lasting shape. By Telas de Primera in rust, natural, brown, gold or navy.

- G8** Tango, 16"x16" **11.00**
- G9** Yuma, 16"x16" **12.00**
- G10** Mesa, 12"x16" **12.00**

G11 Sit back and relax with a battery operated "Vibrating Pillow" from East/West Trading ... you've got to try it to believe it. Decorative too in white, black or cinnamon acrylic "fur". (2 "D" cell batteries not included). **15.00**

G12 Add a touch of the wilderness to your bedroom, living room or den with this luxurious multi-use blanket throw from Biederlack. Washable acrylic/cotton blend. Tiger King design on brown. 60"x80". **36.00**

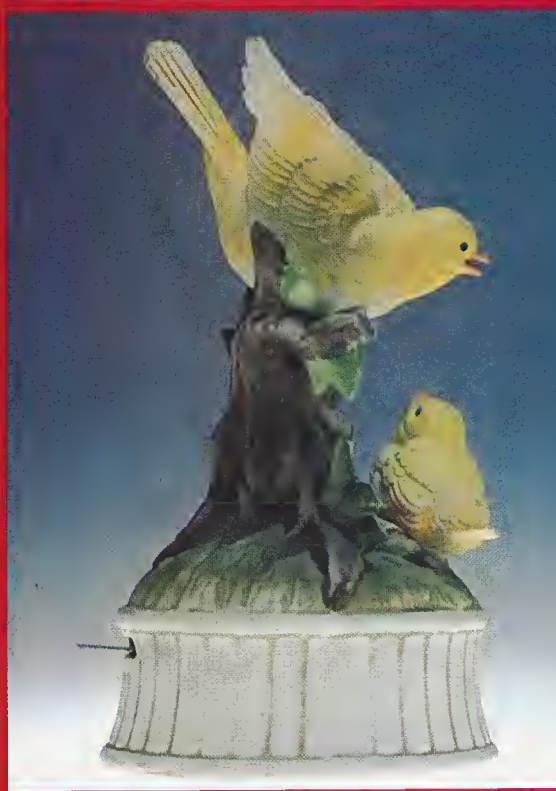
YOUR CHOICE \$4 AND UP



H1



H2



H3



H4



H5



H6

H7

H8



H9

H1. Our beautiful "Bamboo" brass three section server for relish, candy or snacks. By Maurice Duchin. **25.00**

H2. Decorative love birds adorn this imported ceramic fruit and berry set from Style Setter. **20.00**

H3. The gift of music from Annart. Musical bisque birds are hand painted in natural colors. 18 note musical movements play popular tunes. Blue Jay, Canary or Cardinal. **17.00 ea.**

H4. Personalized ornaments in silverplate make a lasting gift as they decorate your tree for the holidays. By Leonard Silver. **1.29 each; 5 for 5.00**

H5. European imported hand cut full lead crystal ship's decanter ... the last word in entertaining. Crystal Clear Imports. **18.00**

Exclusive collection of nostalgic tins reproduced from antique mid-Victorian plates. An unusual yet useful gift imported from England by Certified.

H6. Pears Soap. **4.00**

H7. Cadburys Cocoa Essence. **4.50**

H8. Colmans Mustard Tin. **4.50**

H9. Elegant European designer look musical jewel trinket box by MIM Lador. Full mirror, ring compartment and velvet lined area for valuables. Rich imported petit-point like fabric. 8" x 4 3/4" x 3 1/4". **32.00**



15A



15B

15A. Foxy Sox® Hand crocheted Nordic pattern moccasin slippers. Machine washable. In natural, taupe, blue or rust. One size. **6.00**

15B. Scent-sational gift from Scent-Sation. Padded satin hangers are gift boxed, delicately scented. Apricot, navy, bone, brown or spearmint. Set of 4. **5.00**

15C. The 3-D Arrangement from Burnes o Boston. Add new interest to precious photos when you arrange them in the newest floating style. 16 1/2" x 23 1/2" with 15 photo openings. **16.00**

15D. "The Super Book" from Norwood. Deluxe magnetic photo album has a padded, gold tooled cover. 20 leaves (40 pages). Blue, green, red, brown or ivory. **6.50**

15E. Pick a print rain scarf from Totes. 28" square rain repellent, machine wash 'n drip dry polyester scarves in unusual prints. Navy, red, green, brown, maroon, black, grey, orange or beige. **8.95**

15F. British Sterling Travel Kit. British tan leatherette kit filled with 2 oz. essentials: cologne, after shave lotion, anti-perspirant roll-on deodorant. From Speidel. **9.00**

15G. Trina's newest, sleekest swivel vanity mirror to stand or hang. Distortion free, super magnification one side, large natural on the other. 8 3/4" x 7" and gift boxed. Choose tortoise, onyx or mother of pearl. **12.00**

15H. "Heirloom Trim" for her. 5-pc. manicure set in a beautifully designed steel shell box by W. E. Bassett. **12.50**

15J. "Heirloom Trim" for him. 4-pc. chrome finish manicure set for guys on the go . . . packed in a folding travel case of black simulated elephant hide by W. E. Bassett. **6.50**



15C



15D



15E



15F



15G



15H

15J

NOBODY HAS EVERYTHING

16A. Imported acrylic challis shawl is #1 in fashion. By Glentex in black or white with wide paisley border. **13.00**

16B. Rainy day duo. Gift boxed nylon umbrella with self case, wood color handle, in solid black, navy, red, brown or beige; plus a water repellent acetate 26" square scarf in rich coordinated print. W.I. Umbrella. **Set 10.00**

16C. Bill Blass signature scarves of pure silk twill. Animal print, block print or diagonal stripes—assorted color combinations. 14"x60" oblong. From Sally Gee. Each **16.00**

A beautiful group of priceless looking dazzers ... imported Austrian crystal pendants on 15" sterling silver chains. All are gift boxed and ready to please. From Bowman Foster. **16D.**

Snowflake. **6.00** **16E.** Wafer with faceted edge. **12.00** **16 F.** Carved flowers, 4 styles. **8.00** **16G.** Carved flowers, 4 styles, **10.00**



16A



16B



16C

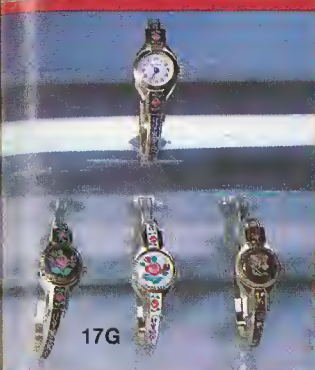


16D

16E

16F

16G



17A. Soft 'n spacious double handle polyurethane swagger bag by Mister Ernest. Black, light brown, dark brown or navy. **25.00**

17B. Wanda vinyl bag packs lots of room plus a removable change purse. From Morris White Fashion in black, camelot, tobacco or fashion brown. **20.00**

17C. Multi-colored chevron design tote by Burlington Handbags. Mahogany (brown), signet (wine) or black. **34.00**

17D. It's the real thing. Genuine leather handbag in black, meadow brown or tan. **25.00**

17E. Flaunt your own initials—first, last or both—on an imported silk/vinyl on sheer 14"x54" oblong scarf by Baar & Beards. (No O,Q,U,V,X,Y,Z). Tan with wine or navy initial; black/tan or brown/tan. **7.00**

17F. Heirloom look triple row antique gold tone chains with chanel crystal, matching intaglio and fob drop. Topaz, Amethyst or clear crystal. Also silver with black diamond. From D&M Jewelry. 24"x39". **15.00**

17G. Watch out for compliments. Elegant hand painted floral design enamel bangle watch with a unique spring hinge cover on dial. One jewel Swiss movement, 2 yr. guarantee. Multi floral on white, blue, black or burgundy. Hudson Watch Co. **17.00**

17H. The foolers from Tancer & Two. Polished gold and pave rhinestone double hearts, leaves or butterflies on a 15" chain. **5.00**

17J. Attention getter. Marvella's marvelous 16 row seed pearl twist necklace is 15" long, has an adjustable clasp. White/grey or white/taupe. **12.50**

17K. Matching white seed pearl wedding band clip back earrings. **5.00**

17L. "Isotoner 500" driving gloves by Aris. Unique soothing Iso-Massage® action. Washable Antron®/nylon Lycra® spandex with leather chevron trim. Black/black, brown/ brown, camel/camel, brown/tan or camel/mink. One size. **15.00**

17M. North-to-South urethane tote by Dover Handbags. Convenient detachable shoulder strap. Black, tobacco, amber, mulberry or navy. **12.00**

17N. It's you. Scotch grain vinyl satchel complete with press-on gold initials (set of 25). From Kadin Bros. in black, tobacco or amber. **22.00**

Breezy Boca Raton leather accessories by Prince Gardner in brown or tan.

17P. Checkbook/secretary. **19.00**

17Q. French purse. **10.00**

17R. Billfold. **14.00**



NIGHT'S NICETIES



18A



18B

18C

2 weeks

18A. Val Mode brings back glamour. The luxury of the fabulous 'forties returns via a fully lined lacy tap pant and cami-sole ensemble. Of DuPont Antron® III satin nylon. Silver, black or wine. P,S,M,L ~~18.00~~ **22.00**

18B. Designers touch from Pucci for Formfit-Rogers. Pucci lace Enkalure® La Georgette™ nylon satin crepe gown with a lacy deep v-neck is the height of sophistication in taupe, alabaster or savoy blue. P,S,M. **25.00**

18C. The natural affinity of lace and satin was never more apparent. Snowdon's Zefran® nylon** satin long gown is be-decked with contrast lace accent on a plunge v-neck. Self tie on front. Pink, peach or bone. S,M,L. **12.00**

*Enkalure® La Georgette™ nylon is a registered trade mark of American Enka Company.

**Zefran is a registered trademark of Dow Badische Company



19A

19A. Pajama dressing at its best. Subtle, sensuous set by Monique of Enkalure® nylon* satin by Enka. Stencil rose print wrap top pairs with solid pant and the effect is bewitching in black or ivory. P,S,M,L **19.00**

ENKALURE is an American Enka registered trade mark.





21A



21B



✓ **20A.** One of these nights you'll be glad you chose a gift from Rosa Puleo-Suzie for Annique. Antron® nylon satin tricot gown has a full flare skirt, embroidered beading on bodice. Taupe, pistachio or ivory. P,S,M,L. **22.00**

✓ **20B.** Matching dolman sleeve robe. P,S,M,L. **32.00**

✓ **20C.** Fresh 'n feminine... dogwood border print caftan has an alluring draped neckline highlighted with a string tie. By Butterfield 8 of Antron® nylon tricot. Black only. P,S,M,L. **34.00**

✓ **20D.** Fit for giving. Boutique's fitted frosted ombre gown of 100% polyester makes a lovely gift in peach, blue or mint. P,S,M,L. **28.00,**

20E. Matching float. P,S,M,L. **39.00**

✓ **21A.** Lisette knows how to make her feel glamorous, witness this full sweep satin ensemble with maribou trimmed sleeves, soft bow neckline. White, black or geranium. S,M,L. **32.00**

✓ **21B.** Pamper your love (or yourself) with a gift of warmth and beauty. Arnel® nylon fleece wrap robe trimmed with satin trapunto collar and cuffs. By Lisanne in brown or black. S,M,L. **35.00**

✓ **21C.** Too pretty to keep at home. Gold or silver mylar sling back sandal with a self covered heel, ornament attached double bands. Marcato Designed by Bertlyn. S,M,ML,L,XL. **10.00**



21C



22A

22B



22C

22D



22E

- ✓ **22A.** Mad for plaid? Give this gal Tommie's 100% yarn dyed cotton flannel plaid Grandfather shirt in a choice of assorted plaids. P,S,M,L. **22.00**
- ✓ **22B.** For #1 on your list . . . "First Lady" zip front robe by Kayser in sumptuous Splendalour DACRON® polyester fleece. Intricately smocked bodice fits to perfection. Wine-berry or blue flame. P,S,M,L. **30.00**
- ✓ **22C.** Dream on in Dreamaway's polyester/cotton brushed long gown with lace trimmed sleeves and neck, embroidered yoke front, ruffle hem. Perfect in peach or ivory. S,M,L. **11.00**
- ✓ **22D.** Make her a star . . . give her this polyester/cotton brushed gown by Suzy Star. Lace trims the deep v-neck and cuffs. Brown/beige or white/beige. 5 to 13. **14.00**
- ✓ **22E.** Plush, plushier, plushiest . . . pile wrap robe with shimmering quilted satin notch collar and cuffs. Say-Lu by Marty Marks. Pine green, burgundy or ivory. P,S,M,L. **40.00**
- ✓ **23A.** Long after winter's passed she'll still reach for Herbcraft's polyester/cotton baby chenille hooded wrap robe. A sure favorite in camel, denim blue or yellow. P,S,M,L. **23.00**
- ✓ **23B.** Footnote. Dearfoams machine washable ankle high booties of Orlon® acrylic with button and loop trim. Foam cushioned for comfort. Jade, beige, peach, red or white. S,M,L,XL. **6.00**

CLIMATE CONTROL



23A



23B

AT EASE



24A

24B

✓ 24A. Far from average granny gown. "Natasha" fur (acrylic/polyester) trims neck and sleeve on a smashing 100% brushed nylon gown from Henson-Kickernick. Azalea rose, carnation pink or jasmine yellow. S,M,L. **16.00**; XL, XXL. **17.00**

24B. Entertaining alternative. Serve up style in a modified caftan by I. Appel. Zip front, satin piped stand up collar, embroidered yoke and cuffs. Celanese Arnel® triacetate nylon fleece. Jade or tea rose. S,M,L. **32.00**

24C. Innocence from Debutante. An embroidered scallop round yoke, Shirred back and lace trim ruffle cuffs make sweet dreams in soft brushed polyester/cotton. Blue or beige.,S,M,L. **11.00**

✓ 24D. The way we were . . . capture the elegance of another era in Smart Time's nylon satin tricort quilt long robe. Zip front, frog closing at neck. Warm KODEL® polyester fiberfill. Blue or pink. P,S,M,L. **27.00**

24E. "Angel Treads" . . . the softest things on two feet. Machine washable "Lorraine" plush velour ballerina style slippers with white pile lining. From R.G. Barry in blue, peach, pink or beige. S,M,L,XL. **6.00**



24C



24E



24D

LIGHTS OUT



25A

25B



25C

25D

25F

25G

25A. Gift boxed plaid flannel wrap robe of flame retardant cotton/polyester, has a shawl collar, self tie belt. By Gold Label Robes in blue/red plaid. M(4-5), L(6-7). **10.00**; S(8-10), M(12-14), L(16-18). **12.00**

25B. Evel Knievel fans will cherish these screen print front ski pajamas by Sullcraft. 100% Caprolan® nylon (1 year guarantee from Allied Chemical Corp.). Knit collar, cuff and anklet. Blue or yellow. 4-7. **8.00**; 8-18. **9.00**

Festivities go on and on in sleepwear from Cassie Cotillion. Sizes 4-14.

25C. Brushed polyester gown has gingham check ruffle on yoke, cuff. Contrast stitch nylon quilt bib yoke, ruffled bottom. Red/white. **10.50**

25D. Solid nylon quilt robe has contrast stitching, gingham check bib yoke. Ruffled yoke and cuff. White with red trim. **16.00**

25E. (Not shown) Matching pajamas. **11.50**
Rosebud Prints by Kid Duds. Sizes 4-14.

25F. Rosebud print Flannel II gown with lace trim cape collar, red ribbon. **10.50**

25G. Matching print robe of nylon quilt. White with red ribbon bow in back. **16.50**

25H. (Not shown) Matching pajamas. **10.50**

25J. Clown around. Boys' 2-pc. polyester houndstooth overall has a perky clown applique. Worn over its own polyester/cotton short sleeve shirt. By Tiny Tots. Red/white. 12-24 mos. **10.00**

25K. (Not shown) Matching overall set for girls has pinafore overall with worm in apple applique, short sleeve blouse. Red/white. 12-24 mos. **10.00**

25L. "Mama-Papa" jacquard design on an acrylic knit, 2-pc. footed coverall. Carriage Boutique by Friedknit Creations. White/red or white/green. M,L. **12.50**

Celebrate with gingham check coordinates from Kozee Komfort. Red, blue, pink or maize.

25M. Quilt and pillow set with lace trim. **17.00**

25N. Double zip pram bag has braid trim. **17.00**

25P. (Not shown) Fitted crib sheet. **5.00**



25J

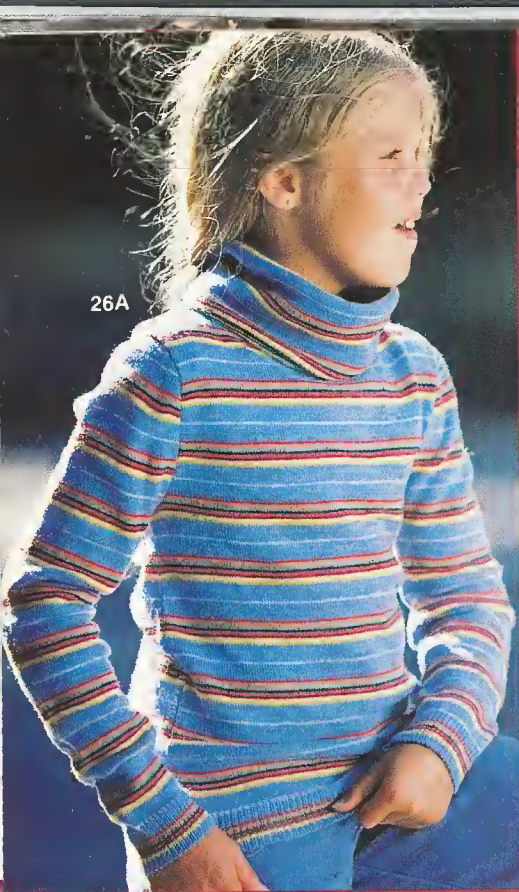


25L



25M

25N



26A



26B

26C



26D



26E



26F

26A. Striped 100% Orlon® acrylic cowl neck sweater by Justin Charles makes the scene in blue, white, maize. S,M,L (4-6X). **9.00**; S,M,L (7-14). **9.50**

26B. Classic cable crew sweater by Blue Bird in 100% DuPont Orlon® acrylic. Ivory only, of course. 4-7. **12.00**; 8-18. **15.00**

26C. May Knitting's version of the popular bulky ski-look cardigan, in easy care 100% acrylic. Red, white or navy. 4-6X. **10.00**; 7-14. **11.50**

26D. Our choice, and hers, is this floral print long dress by Seibel & Stern. 2-pc. look with apron effect, smocked bodice, deep ruffle hem. Bone eyelet, ribbon and flowers for trim. Pink/natural. 4-6X. **24.50**; 7-14. **26.50**

26E. Dakin does it . . . makes the most adorable beanbag animals you've ever seen! Drooper Dog, Panda Bear or Baby Bearfoot Bear. **5.00 ea.** Obie Owl, Ricki Raccoon or Magpie Monkey. **3.50 ea.**

26F. He's all set. 3-pc. sweater set from Esquire Jr. has elastic back, texturized polyester fly front pants paired with a polyester/cotton ribbed turtleneck and topped by a heather stripe v-neck sweater shirt. Green only 4-7. **22.00**

SWELL NOEL

Snuggle up to a Snoopy or put him in charge of your savings. All from Determined Productions.*

- 27A.** Plush Snoopy. **9.00**
- 27B.** Red night gown and cap for Snoopy. **2.50**
- 27C.** Snoopy's chair. **4.00**
- 27D.** (Not Shown) Snoopy's red Santa outfit. **4.00**
- 27E.** Ceramic Woodstock Bank. **4.50**
- 27F.** Ceramic Happy Snoopy Bank. **5.00**
- 27G.** Ceramic Doghouse Bank. **4.00**

All from Butterfly Originals.*

- 27H.** Ideal for all ages. Snoopy beanbag. **4.00**
- 27J.** Yellow Woodstock beanbag. **4.00**
- 27K.** Bulky 2-tone knit hat with pom-pom, Snoopy applique on cuff. Ages 4-14. **4.00**

27L. Matching mittens. S,M,L(4-14). **2.50**

27M. Snoopy fans from 4 to 12 will adore this vinyl Snoopy House bag with novelty door opening. Pyramid Handbags.* White/red. **3.00**

27N. Assorted Peanuts prints adorn a popular, fun velcro ball dart game from Synergistics Research.* **8.00**

*Peanuts Characters: © 1950, 1958, 1965 United Feature Syndicate, Inc.

Colorful cool weather gear from Hot Nitz/Hot Sox.

27P. Rainbow striped zip front acrylic sweater has a hood and pouch pockets. 4-6X. **15.00**; 7-14. **16.00**

27Q. Multi-stripes adorn the turtleneck collar, cuff and hem of this 100% acrylic sweater. Royal or red. 4-6X. **12.00**; 7-14. **14.00**

27R. Rainbow stripe hat. One size fits all. **4.00**

27S. Matching mittens. 3-6. **2.50**; 7-12. **3.00**

27T. Scoreboard's fleece lined acrylic knit shirt has Bruce Jenner "Worlds' Greatest Athlete" chest emblem, 4 award sleeve stripes. Yellow/navy, red/navy or green/navy. 8-18. **12.00**

27U. Tops on the list ... Monsanto Wear-Dated®* acrylic fleece back sweat-shirts from Empire Shield in assorted colors. 4-tone pullover has hood, front pouch pocket. 4-6X. **7.00**; 7-14. **8.00**. Also available in zip-front styles.

*Warranted for 1 full year's normal wear, refund or replacement when returned with tag & sales slip to Monsanto.



